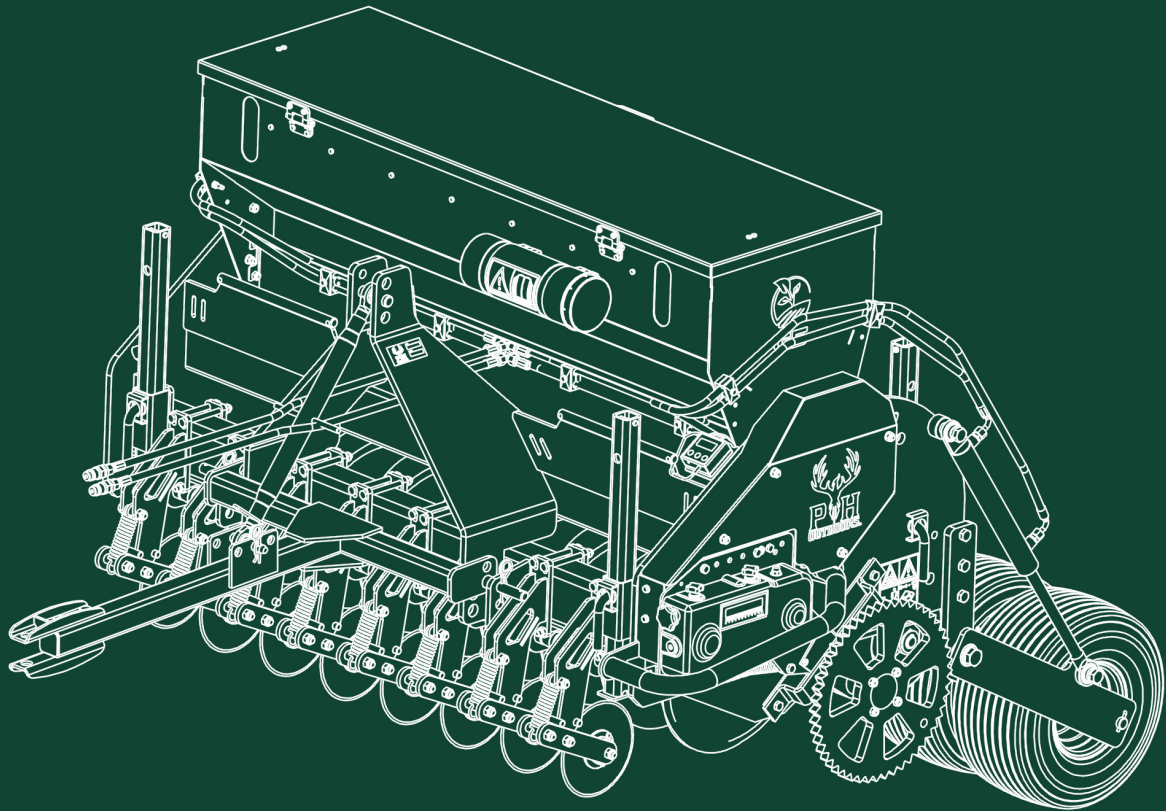


PH OUTDOORS™



G5 & G8 No-Till Drill Original Parts Manual

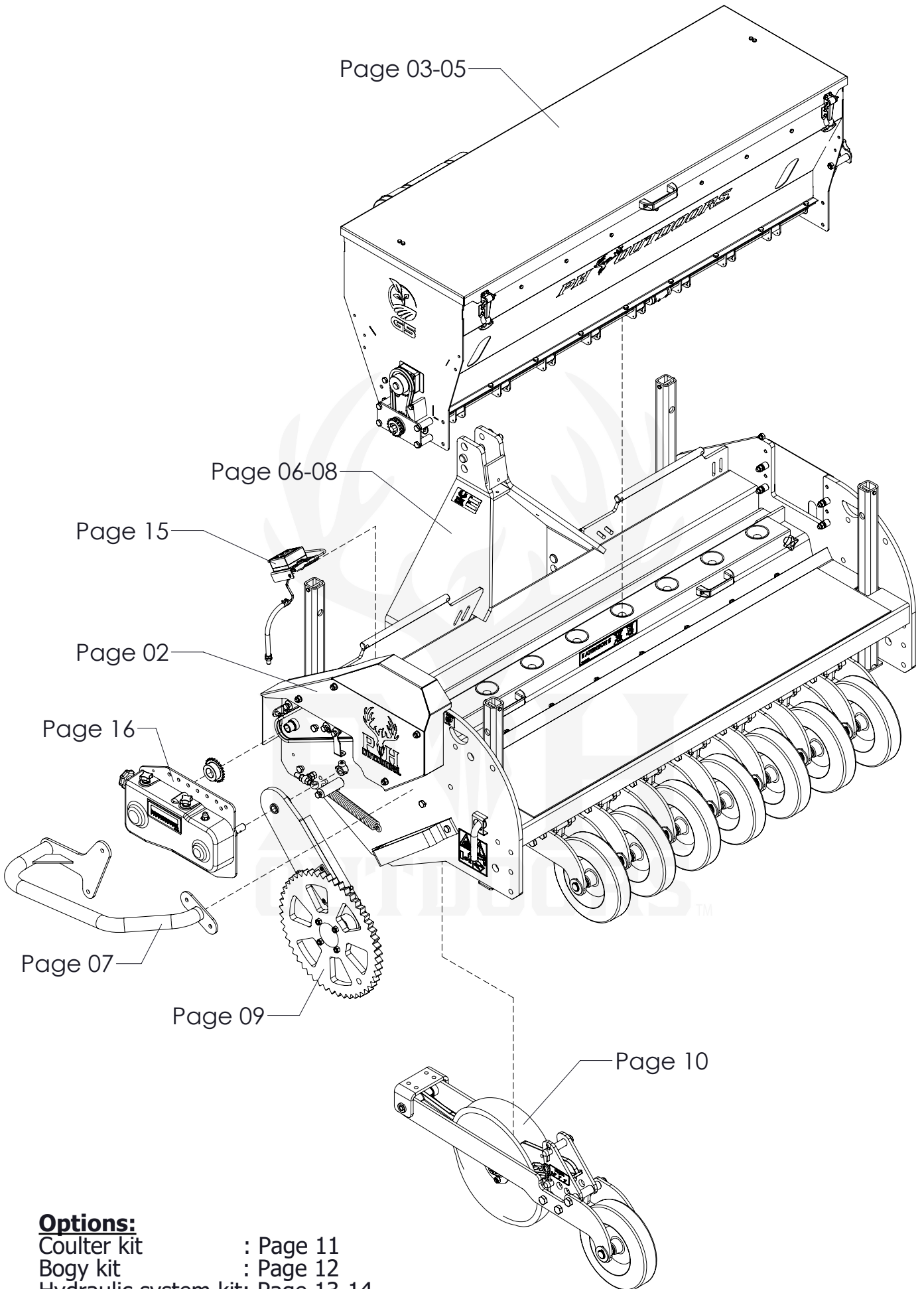


*Illustrations may include optional items that are not included in standard package

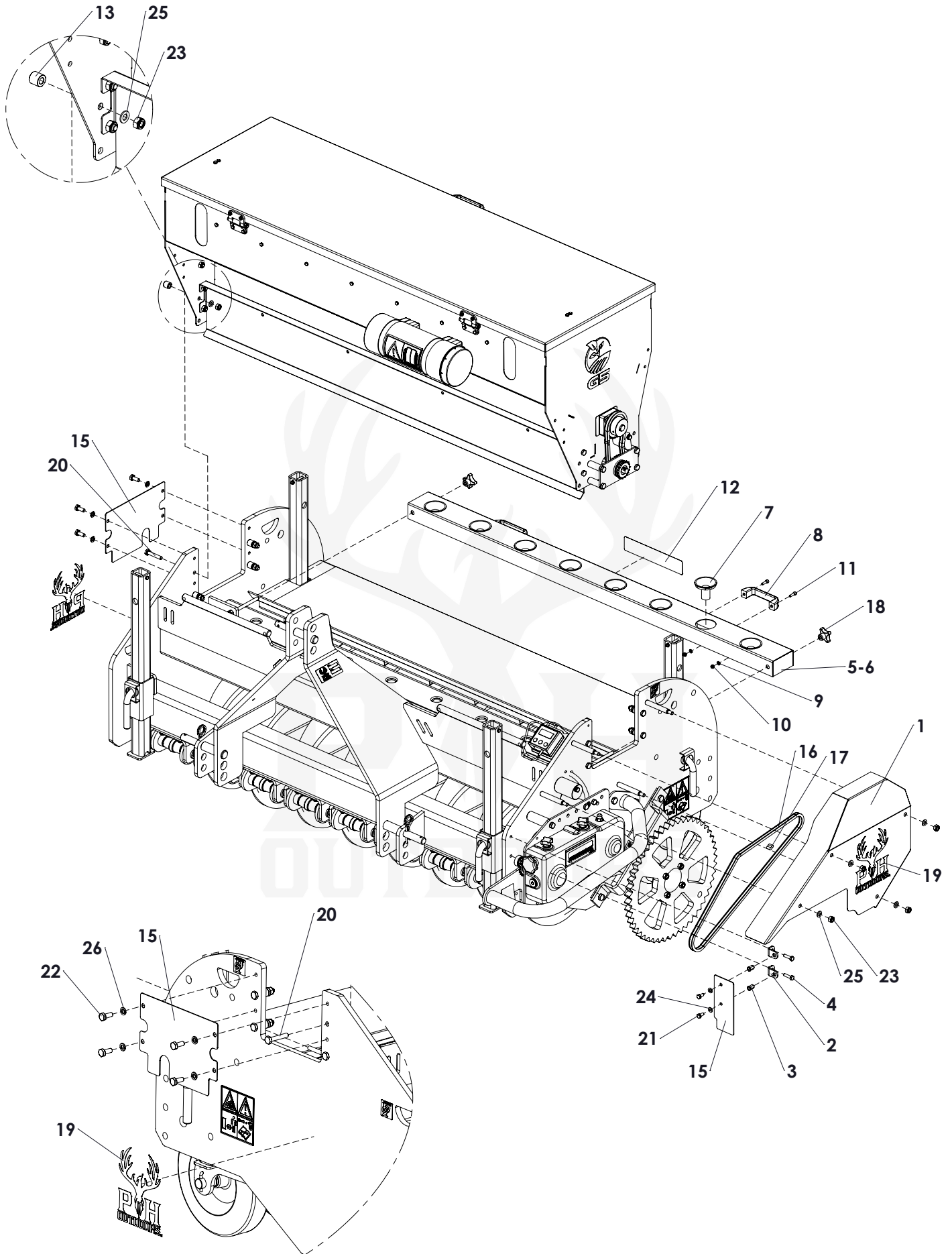
PH Outdoors, LLC

P.O. Box 480
Eureka, MO 63025

Parts Book
Revision 011023

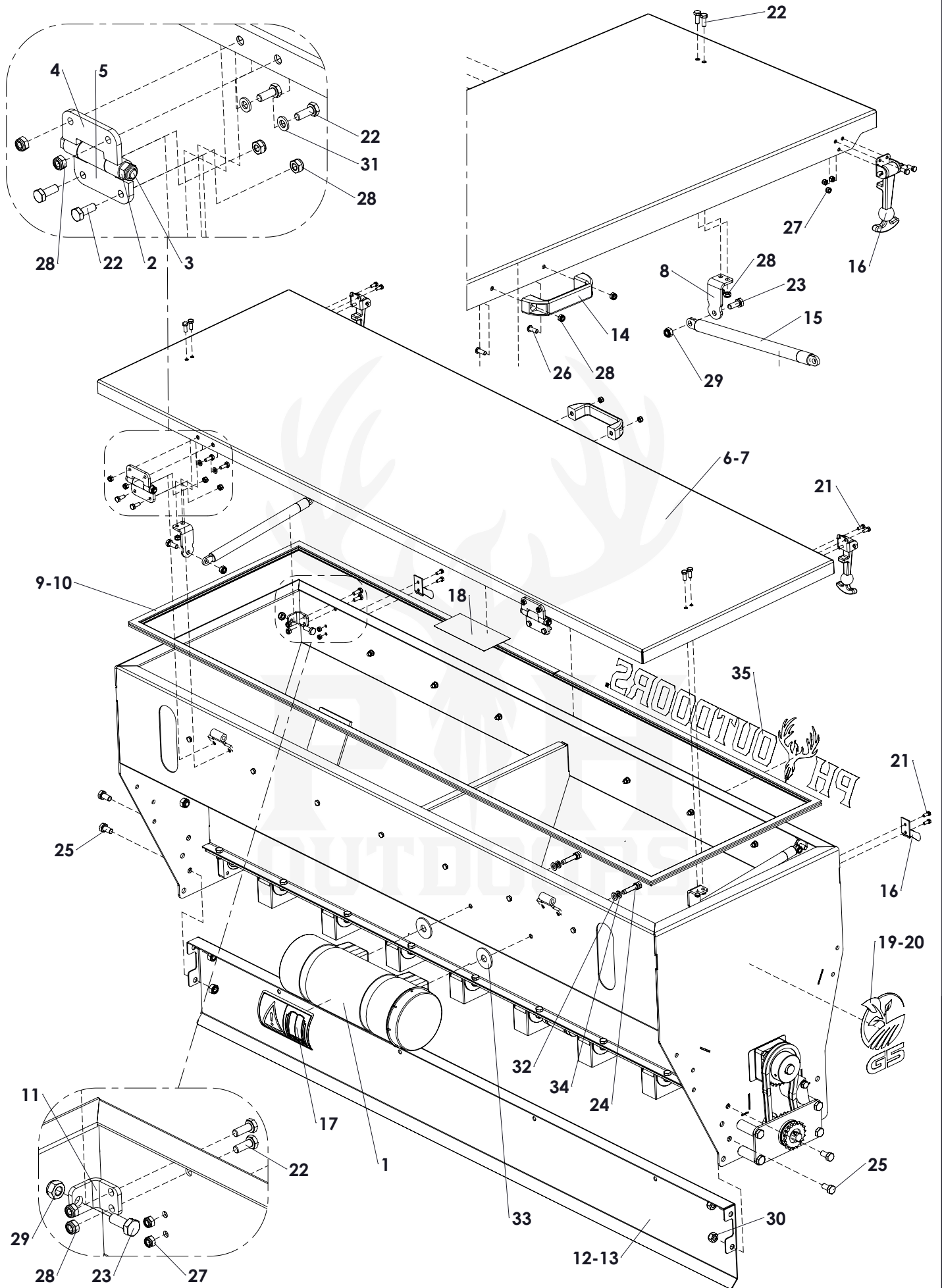


- Options:**
- Coulter kit : Page 11
 - Bogy kit : Page 12
 - Hydraulic system kit: Page 13-14

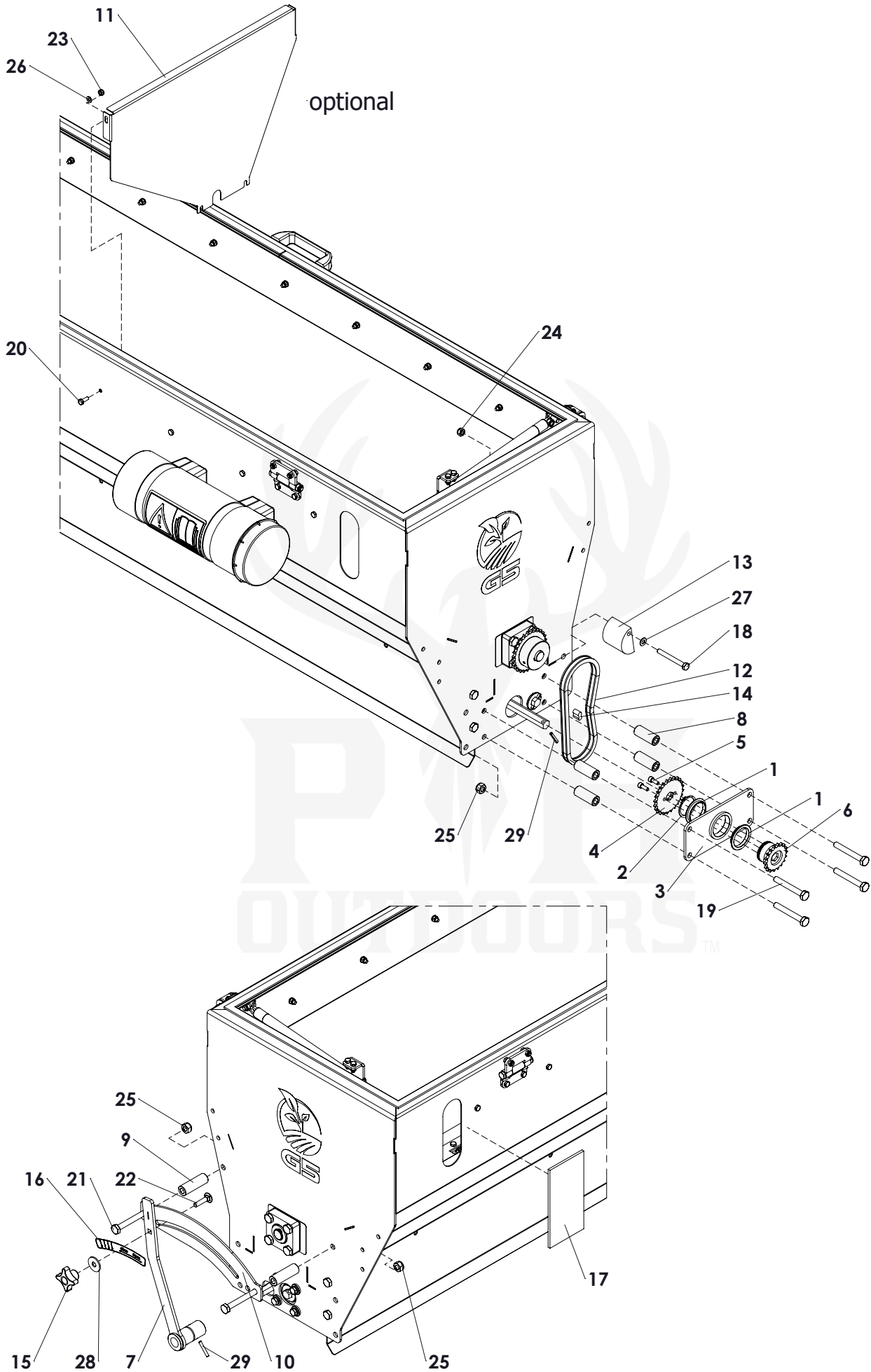


PH Outdoors LLC		G5 / G8	Page 02	
Pos.	Part number	Description	Qua. G5	Qua. G8
1	G000001	Cover G machine	1	1
2	G500009	Bracket	2	2
3	1808003	Hexagon Blind Rivet Nut M8	2	2
4	1008030	Bolt M8 x 30	2	2
5	G500010	Funnel frame G5	1	0
6	G800009	Funnel frame G8	0	1
7	G000029	Funnel	8	13
8	3900002	Handle	2	2
9	2210600	Washer M6	4	4
10	1706100	Self-Lock Nut M6	4	4
11	1420620	Bolt M6 x 20	4	4
12	4010001	Decal funnel	1	1
13	6010182	Distance bush	8	8
14	G000002	Cover plate	1	1
15	G500011	Cover plate	1	1
16	3338131	Chain 3/8" 131 shackle	1	1
17	3438000	Chain connector 3_8 inch	1	1
18	1810001	Knob M10	2	2
19	4020007	Label PH Outdoors	2	2
20	1110055	Bolt M10 x 55	8	8
21	1008016	Bolt M8 x 16	2	2
22	1010025	Bolt M10 x 25	4	4
23	1710150	Self-Lock Nut M10	12	12
24	2210800	Washer M8	2	2
25	2211000	Washer M10	12	12
26	2221000	Spring Washer M10	4	4

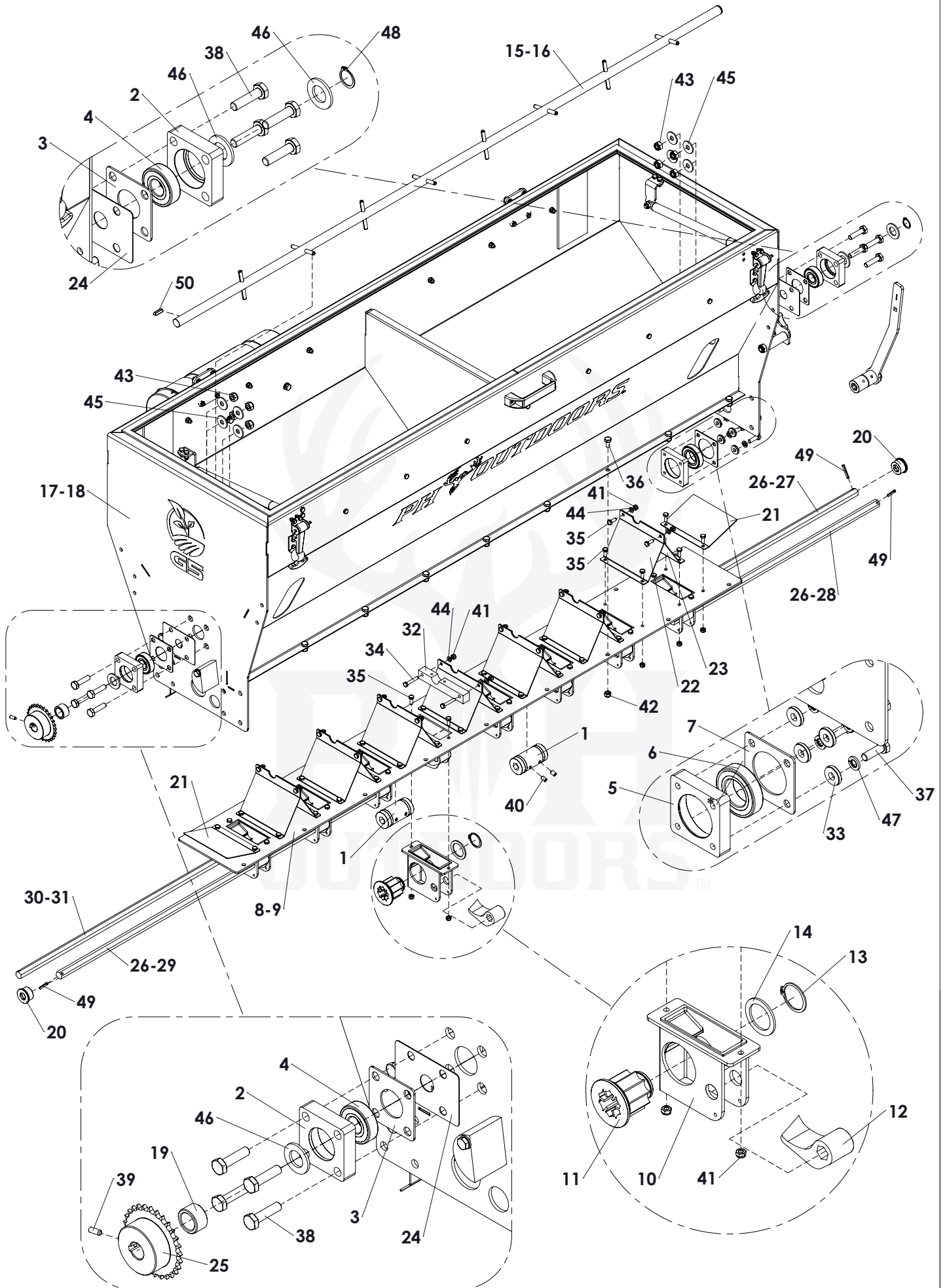




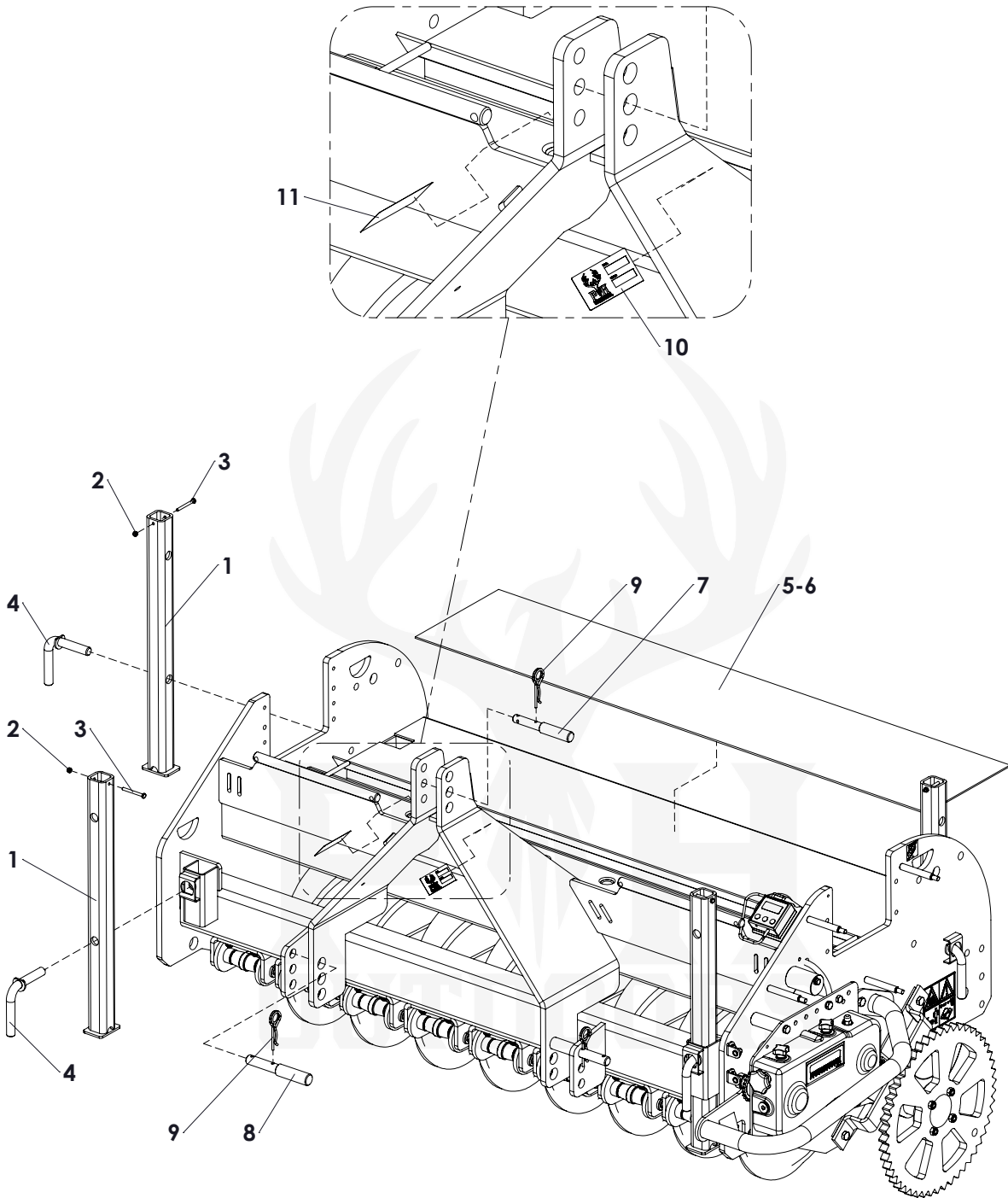
Pos.	Part number	Description	Qua. G5	Qua. G8
1	3900003	Toolbox assembly	1	1
2	1708125	Self-lock nut M8	2	3
3	1108075	Bolt M8 x 75	2	3
4	G000003	Hinge part 1	2	3
5	G000004	Hinge part 2	2	3
6	G500001	Top cover G5	1	0
7	G800001	Top cover G8	0	1
8	G000005	Support L=65mm	2	2
9	G500012	Rubber U-seal 1-4mm L=4030	1	0
10	G800010	Rubber U-seal 1-4mm L=5560	0	1
11	G500028	Support L=30mm	2	2
12	G500013	Cover plate G5	1	0
13	G800011	Cover plate G8	0	1
14	3900002	Handle	1	1
15	G000028	Gas strut L=485/stroke=200 F=500	2	2
16	3900005	Rubber lock assy	2	2
17	4010002	Safety decal manual	1	1
18	4020009	Decal seed hopper		
19	G500002	Label G5	2	0
20	G800002	Label G8	0	2
21	1005012	Bolt M5 x 12	8	8
22	1006016	Bolt M6 x 16	16	20
23	1008020	Bolt M8 x 20	4	4
24	1008035	Bolt M8 x 35	2	2
25	1010020	Bolt M10 x 20	4	4
26	2106016	Bolt M6 x 16	2	2
27	1705080	Self-Lock Nut M5	8	8
28	1706100	Self-Lock Nut M6	18	22
29	1708125	Self-Lock Nut M8	4	4
30	1710150	Self-Lock Nut M10	4	4
31	2210600	Washer M6	4	6
32	2210800	Washer M8	2	2
33	2211401	Large washer M14	2	2
34	2220800	Spring Washer M8	2	2
35	4020000	Label PH Outdoors	1	1



Pos.	Part number	Description	Qua. G5	Qua. G8
1	3240070	Bearing bush	2	2
2	2614000	Circlip d=40	1	1
3	G000006	Gear base	1	1
4	G000007	Sprocket 3/8"	1	1
5	4020616	Bolt M6 x 16	2	2
6	G000008	Sprocket 3/8"	1	1
7	G000009	Valve adjustment	1	1
8	6010050	Distance bush Ø20/Ø10.5 L=50	4	4
9	6010060	Distance bush Ø20/Ø10.5 L=60	2	2
10	G000011	Guide strip	1	1
11	GDO-02	Divider plate optional	7	12
12	3338063	Chain 3/8" 63 shackle	1	1
13	G000012	Chain Tensioner	1	1
14	3438000	Chain connector 3_8 inch	1	1
15	1808001	Knob M8	1	1
16	4020005	Decal adjustment valve	1	1
17	G000027	Window	4	4
18	1108070	Bolt M8 x 70	1	1
19	1110075	Bolt M10 x 75	4	4
20	1006016	Bolt M6 x 16	14	24
21	1010080	Bolt M10 x 80	2	2
22	1308035	MH Bolt M8 x 35	1	1
23	1706100	Self-Lock Nut M6	14	24
24	1708125	Self-Lock Nut M8	1	1
25	1710150	Self-Lock Nut M10	6	6
26	2210600	Washer M6	14	24
27	2210800	Washer M8	1	1
28	2211001	Large washer M10	1	1
29	2405032	Roll pin Ø5x32	2	2

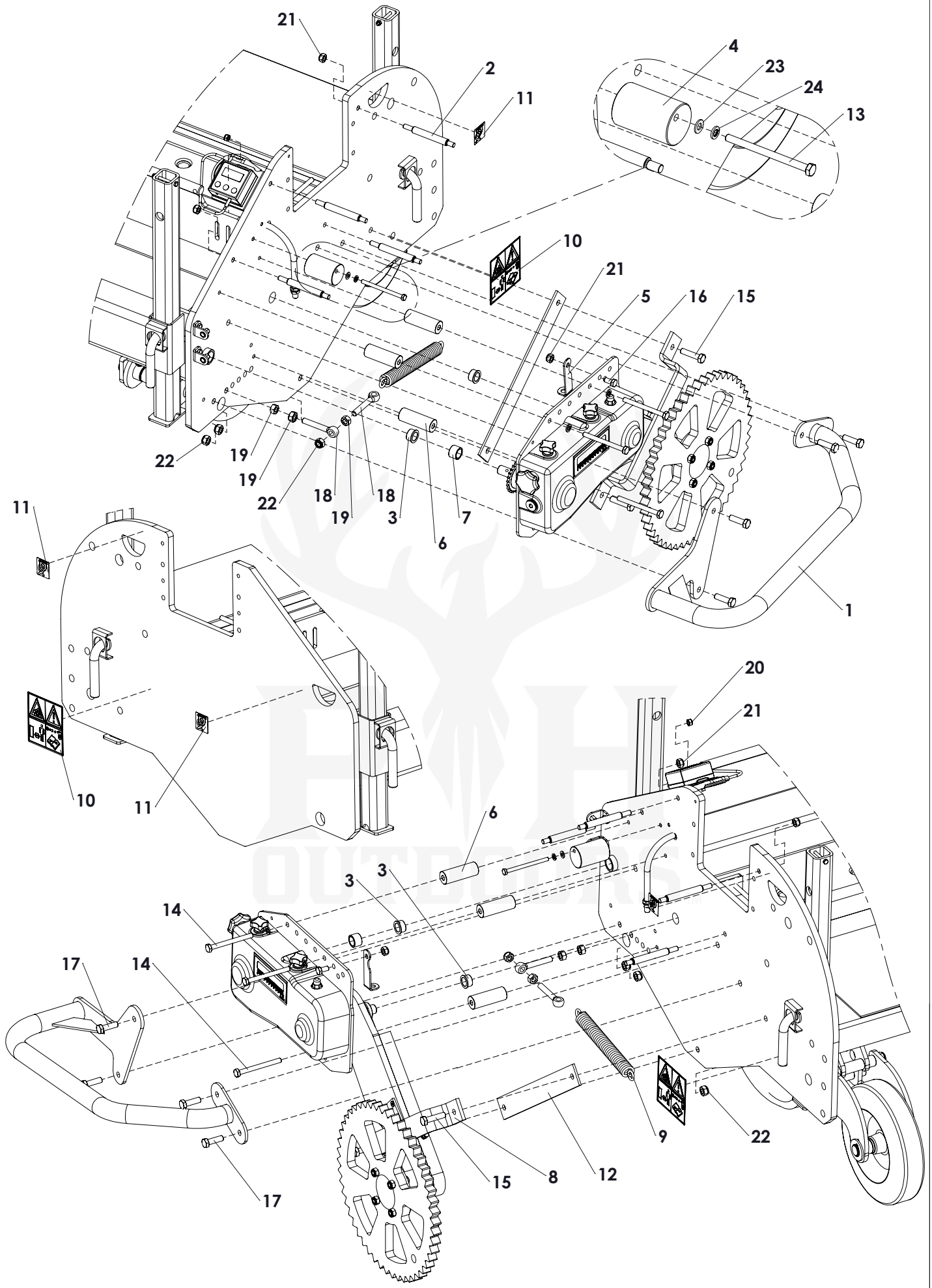


Pos.	Part number	Description	G5	G8
1	G100002	Coupling bush	2	2
2	G000017	Bearing block	2	2
3	G000018	Cover plate	2	2
4	2806204	Bearing 6204-C-2HRS	2	2
5	G000097	Bearing block	1	1
6	2806006	Bearing 6006 LLU	1	1
7	G000098	Cover plate large hole	1	1
8	G500017	Plate G5	1	0
9	G800015	Plate G8	0	1
10	G000013	Seed element casing	8	13
11	G000014	Seed element rotor	8	13
12	G000015	Seed element valve	8	13
13	2613200	Circlip d=32	8	13
14	G000016	Washer	8	13
15	G500014	Agitator shaft G5	1	0
16	G800013	Agitator shaft G8	0	1
17	G500015	Seed hopper G5	1	0
18	G800014	Seed hopper G8	0	1
19	6021017	Distance bush D30/D21 L=17.5	1	1
20	G000024	Bush	2	2
21	G000019	Divider side plate	2	2
22	G000020	Divider plate left	7	12
23	G000021	Divider plate right	7	12
24	G000022	Cover plate small hole	2	2
25	G000023	Sprocket 3/8" (06B) simplex 28Z Ø15	1	1
26	G500018	Hexagon shaft L= 997 mm / 39.25"	2	1
27	G800016	Hexagon shaft L= 1381 mm /53.37"		1
28	G500019	Hexagon Shaft L= 644 mm / 25.35"	1	
29	G800017	Hexagon shaft L= 1596.5 mm / 62.85"		1
30	G500020	Hexagon Shaft L=703 mm / 27.68"	1	
31	G800018	Hexagon shaft L= 1271.5 mm / 50"		1
32	G500021	Guide Block	1	1
33	2210801	Washer M8	4	4
34	1006035	Bolt M6 x 35	2	2
35	1006016	Bolt M6 x 16	66	106
36	1008016	Bolt M8 x 16	18	28
37	1008025	Bolt M8 x 25	4	4
38	1010040	Bolt M10 x 40	8	8
39	2506016	Set screw M6 x 16	1	1
40	2508012	Set screw M8 x 12	4	4
41	1706100	Self-Lock Nut M6	66	106
42	1708125	Self-Lock Nut M8	23	38
43	1710150	Self-Lock Nut M10	15	15
44	2210600	Washer M6	32	52
45	2211001	Large washer M10	8	8
46	2212000	Washer M20	3	3
47	2220800	Spring Washer M8	4	4
48	2612000	Circlip d=20	1	1
49	2405032	Roll pin Ø5x32	4	4
50	4160025	Key 6x6x25	1	1

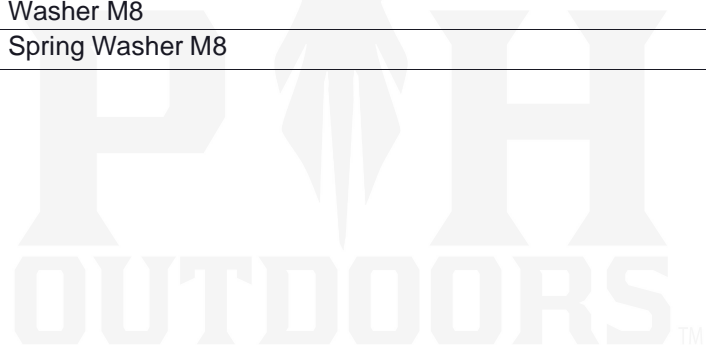


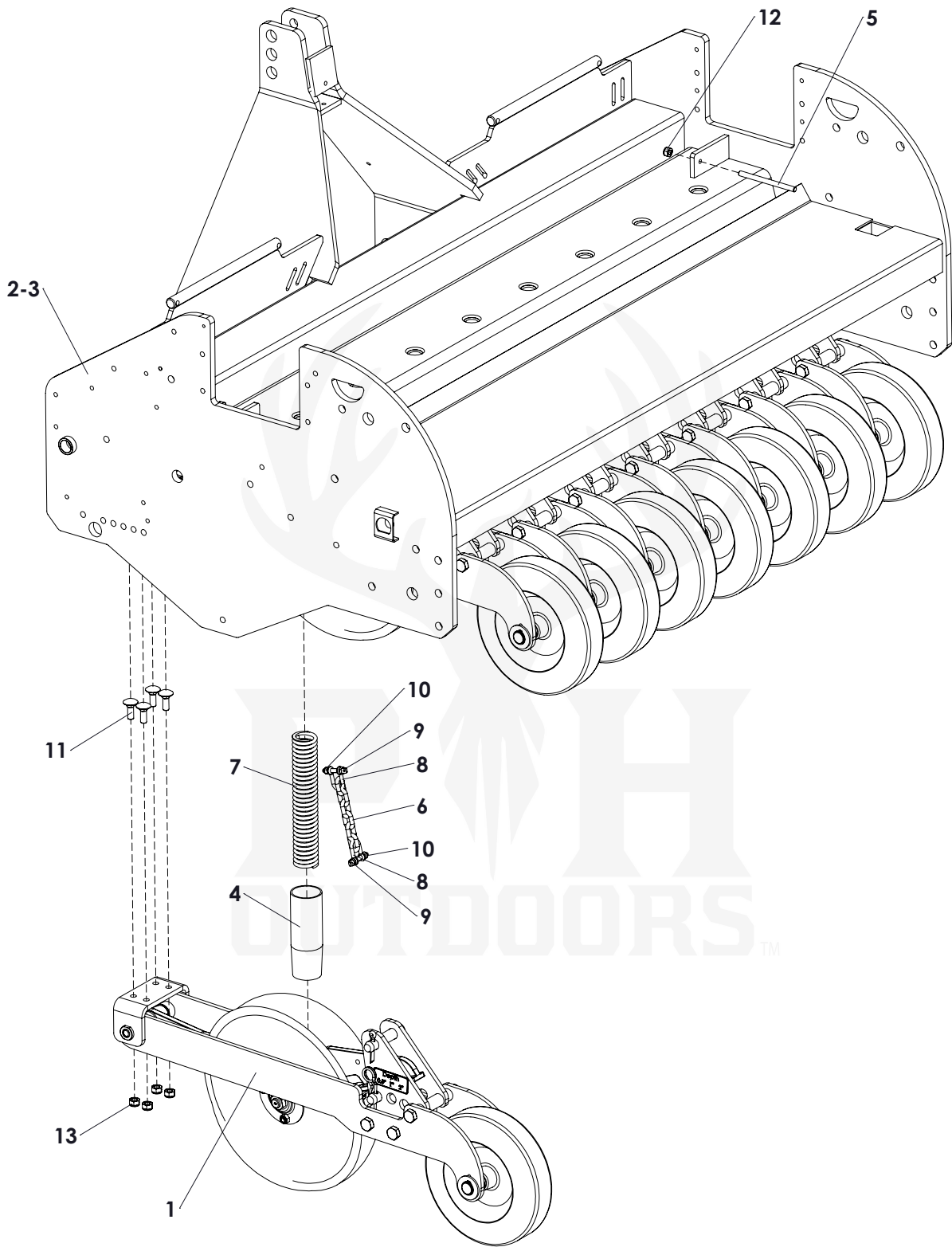
Pos.	Part number	Description	Qua. G5	Qua. G8
1	G000030	Leg	4	4
2	1706100	Self-Lock Nut M6	4	4
3	1106060	Bolt M6 x 60	4	4
4	G000031	Lock pin	4	4
5	G500022	Rubber grip plate G5	1	0
6	G800019	Rubber grip plate G8	0	1
7	3821625	Top link pin	1	1
8	3822228	3-point pin	2	2
9	3830500	R-clip Round 5	3	3
10	4020006	Serial number label	1	1
11	4020010	QR code label	1	1



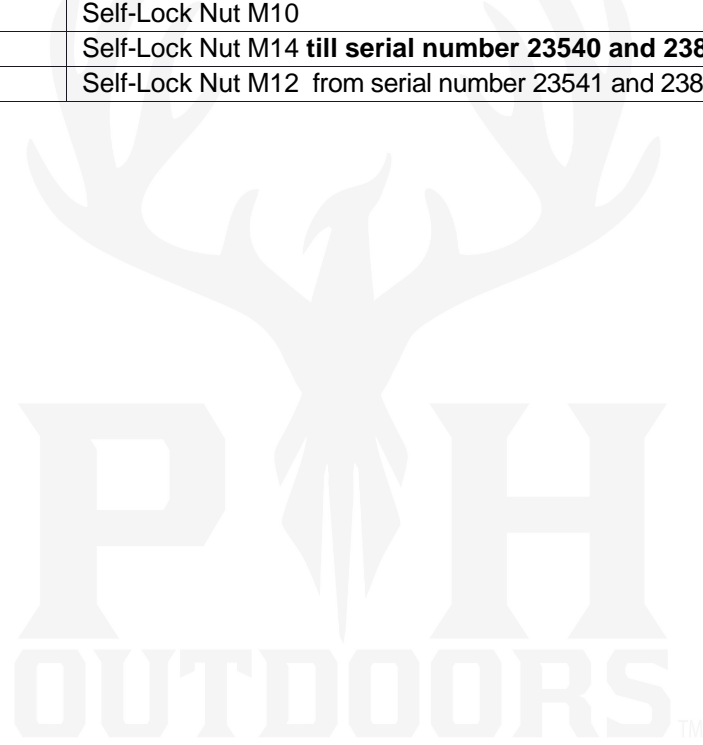


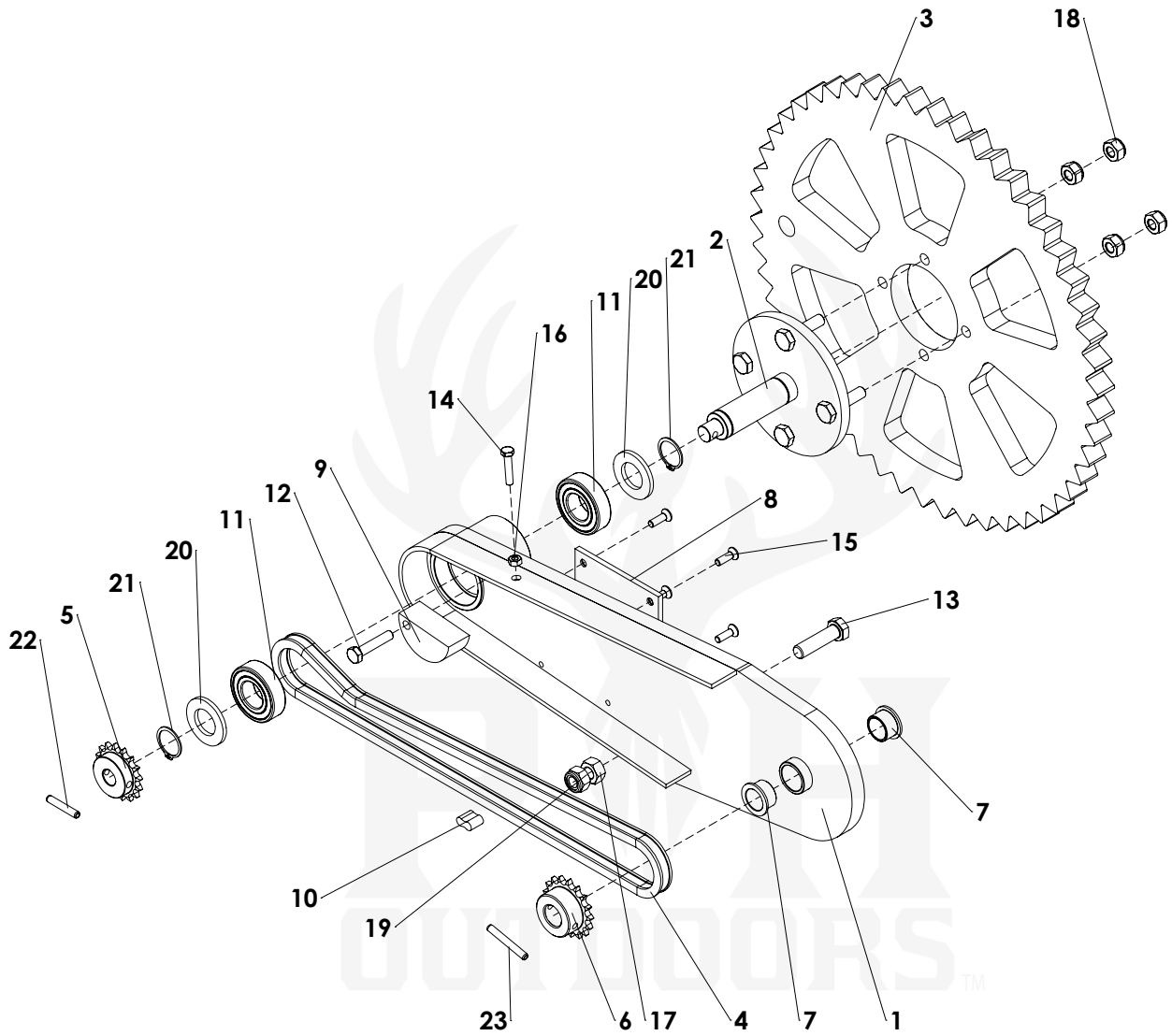
Pos.	Part number	Description	G5	G8
1	G300031	Gearbox protection	1	1
2	G000032	Stud Ø15 L=134	4	4
3	3220150	Bearing bush gear axle	2	2
4	G300032	Spanner	1	1
5	G000033	Sensor bracket	1	1
6	G500023	Spacer	3	3
7	G500024	Bush	1	1
8	G500025	Guide swingarm	1	1
9	3630250	Spring wheel axle	1	1
10	4010003	Safety decal	2	2
11	4020002	Decal fixation point	3	3
12	G500026	Guide bar side plate	1	1
13	1108110	Bolt M8 x 110	1	1
14	1110110	Bolt M10 x 110	3	3
15	1012050	Bolt M12 x 50 -10.9	2	2
16	1010020	Bolt M10 x 20	1	1
17	1012040	Bolt M12 x 40	4	4
18	4212080	Eye Bolt M12x80	2	2
19	1801200	Nut M12	3	3
20	1708125	Self-Lock Nut M8	3	3
21	1710150	Self-Lock Nut M10	6	6
22	1712175	Self-Lock Nut M12	12	12
23	2210800	Washer M8	1	1
24	2220800	Spring Washer M8	1	1





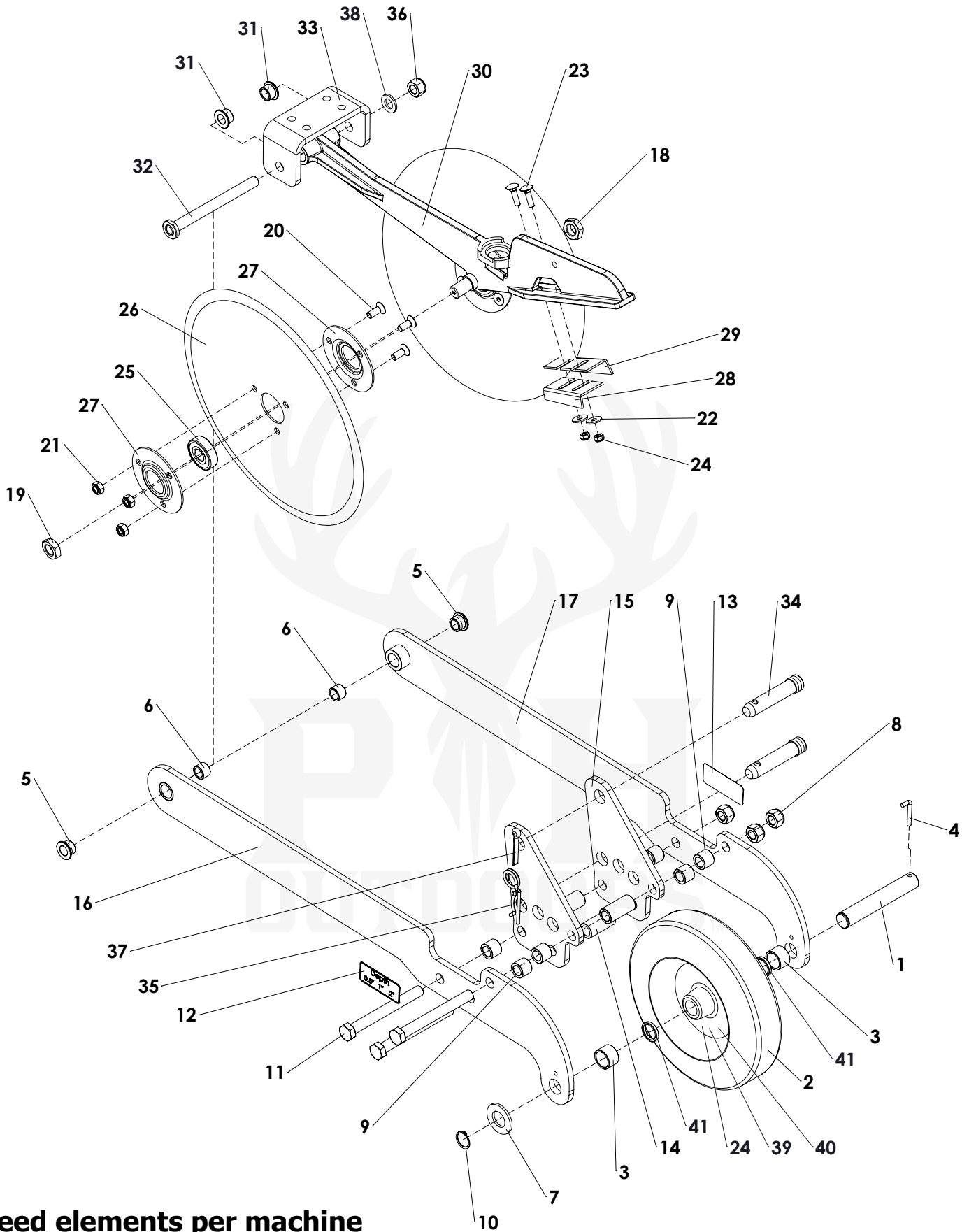
Pos.	Part number	Description	G5	G8
1	See page 10	Seed element	8	13
2	G500027	Base frame G5	1	0
3	G800020	Base frame G8	0	1
4	G000041	Seed guide	8	13
5	2310170	Threaded rod M10	2	2
6	3510806	Chain 6-links D=8mm L=152 (±6")	8	13
7	3705040	Compression spring disc assembly	8	13
8	3520800	D-Shackle d=8mm (complete with bolt and nut)	16	26
9	1008045/10.9	Bolt M8 x 45 10.9	16	26
10	1708125	Self-Lock Nut M8	16	26
11	1312035	MH Bolt M12 x 35 from serial number 23541 and 238009	32	52
11	1014035	Bolt M14 x 35 till serial number 23540 and 238008	32	52
12	1710150	Self-Lock Nut M10	2	2
13	1714200	Self-Lock Nut M14 till serial number 23540 and 238008	32	52
13	1712175	Self-Lock Nut M12 from serial number 23541 and 238009	32	52





Pos.	Part number	Description	Qty.
1	G000035	Frame swingarm	1
2	G000036	Wheel hub	1
3	G000038	Drive wheel	1
4	3338106	Chain 3/8"	1
5	G000039	Sprocket 3/8" (06B) simplex 16Z	1
6	G000040	Sprocket 3/8" (06B) simplex 17Z	1
7	3220152	Bearing bush swingarm	2
8	G000044	Guide plate swingarm	1
9	G000043	Chain tensioner	1
10	3438000	Chain connector 3/8"	1
11	2806205	Bearing 6205-LLU	2
12	1108040	Bolt M8 x 40	1
13	1112045	Bolt M12 x 45	1
14	1006030	Bolt M6 x 30	1
15	1410620	Bolt M6 x 20	4
16	1806100	Nut M6	1
17	1812175	Nut M12	1
18	1710150	Self-Lock Nut M10	4
19	1712175	Self-Lock Nut M12	1
20	2212400	Washer M24	2
21	2612500	Circlip d=25	2
22	2406035	Roll Pin 6 x 35	1
23	2406045	Roll Pin 6 x 45	1





Seed elements per machine

G3 : 5 elements

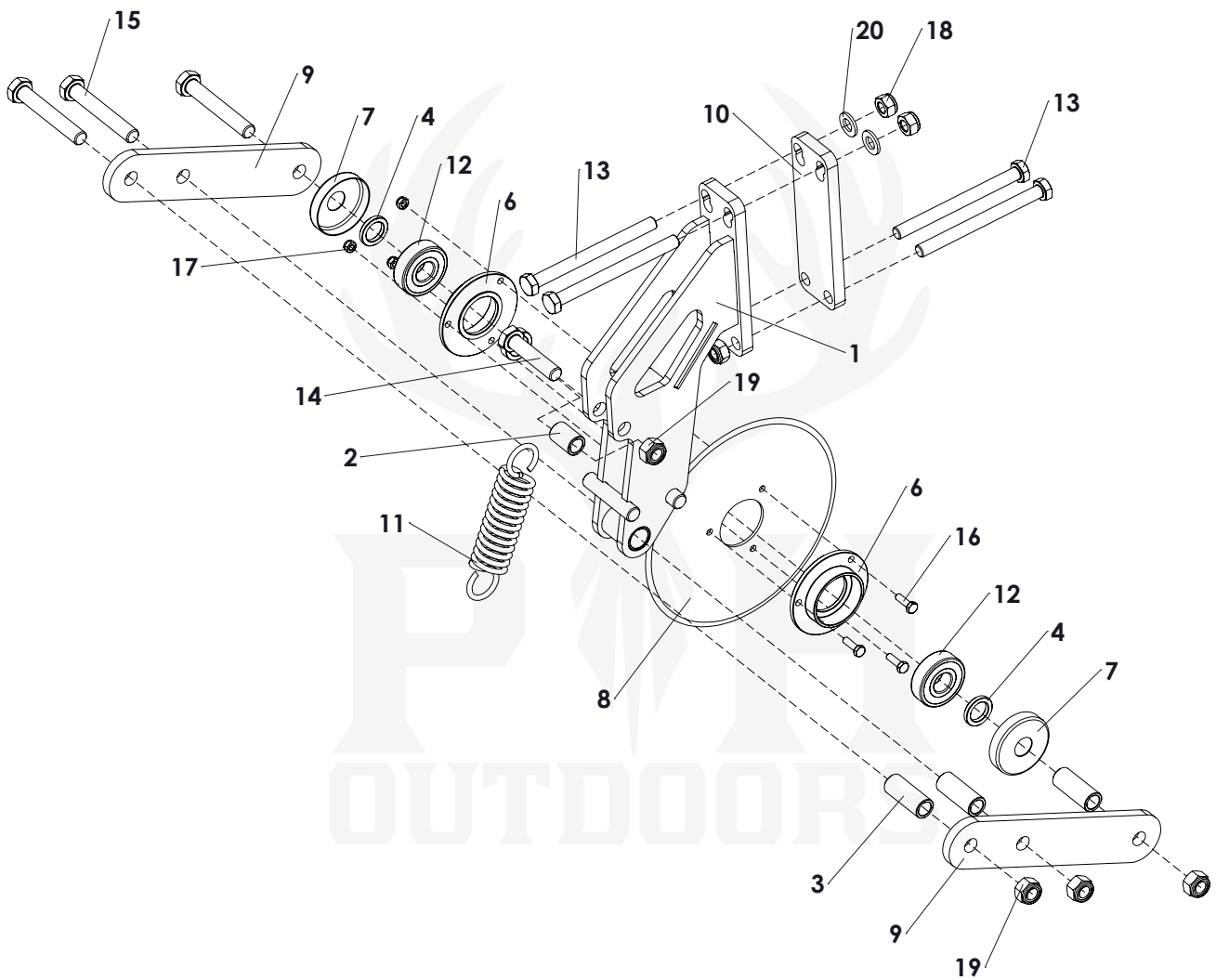
G5 : 8 elements

G8 : 13 elements

G10: 16 elements

!!! wheel replaced from serial nr G3 233079/G5 235222/G8 238032/G10 231005

Pos.	Part number	Description	Qty.
1	G000045	Shaft	1
2	4328071	Wheel complete will replace item nr 4328070	1
3	6025020	Distance bush	2
4	3830648	Lock pin	1
5	3216150	Bearing bush	2
6	3216155	Bearing bush	2
7	2212700	Washer 27 mm	1
8	1716200	Self-Lock Nut M16	3
9	6017020	Bush Ø16.5/Ø25 L=20	6
10	2612500	Circlip d=25	1
11	1116150	Bolt M16 x 150	3
12	4020003	Depth decal left	1
13	4020004	Depth decal right	1
14	6017052	Distance bush Ø25/Ø16.5 L=52	3
15	G000046	Height plate	2
16	G000047	Weldment seed element left	1
17	G000048	Weldment seed element right	1
18	1820002	Thin Nut M20 Right Hand Thread	1
19	1820002L	Thin Nut M20 Left Hand Thread !!!!!	1
20	1411025	Bolt M10 x 25	6
21	1710150	Self-Lock Nut M10	6
22	2210801	Large washer M8	2
23	1308030	MH Bolt M8 x 30	2
24	1708125	Self-Lock Nut M8	2
25	2806304	Bearing 6304-LLU	2
26	G000049	Cutting disk Ø406	2
27	G000050	Center plate	2
28	G000051	Disc Scraper Large	1
29	G000052	Disc Scraper Small	1
30	G000053	Element	1
31	3216150	Bearing bush	2
32	G000054	Seeding element shaft	1
33	G000055	U holding bracket	1
34	3822112	Pin	2
35	3830500	R-clip Round 5,	1
36	1716200	Self-Lock Nut M16	1
37	2408050K	Cotter Pin 8 x 50	1
38	2211600	Washer M16	1
39	1008016	Bolt M 8 x 16	6
40	1708125	Bearing 6205 2RS	2
41	6025005	Distance washer	2



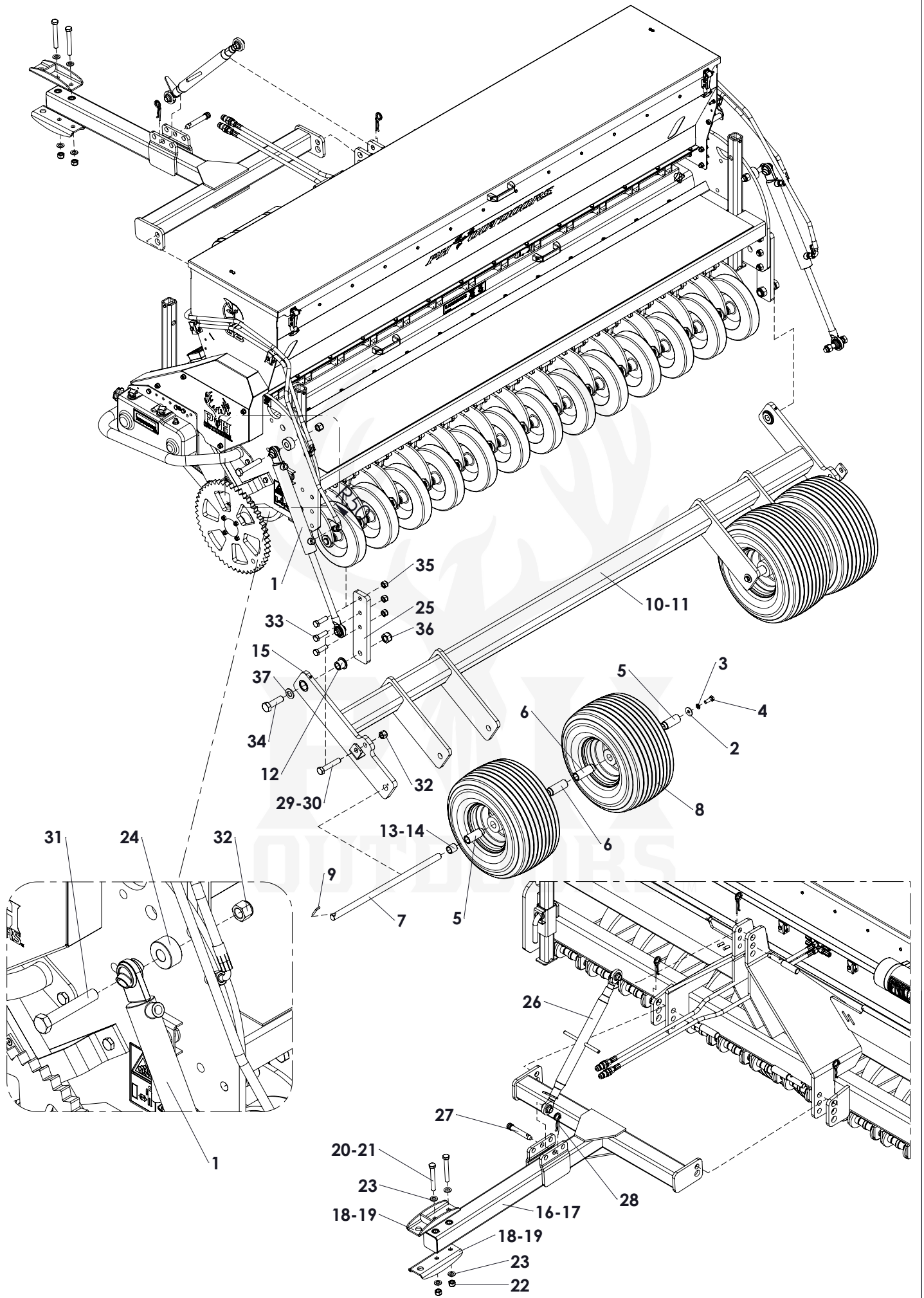
Coultter kits per machine

- G3 : 5 kits
- G5 : 8 kits
- G8 : 13 kits
- G10: 16 kits

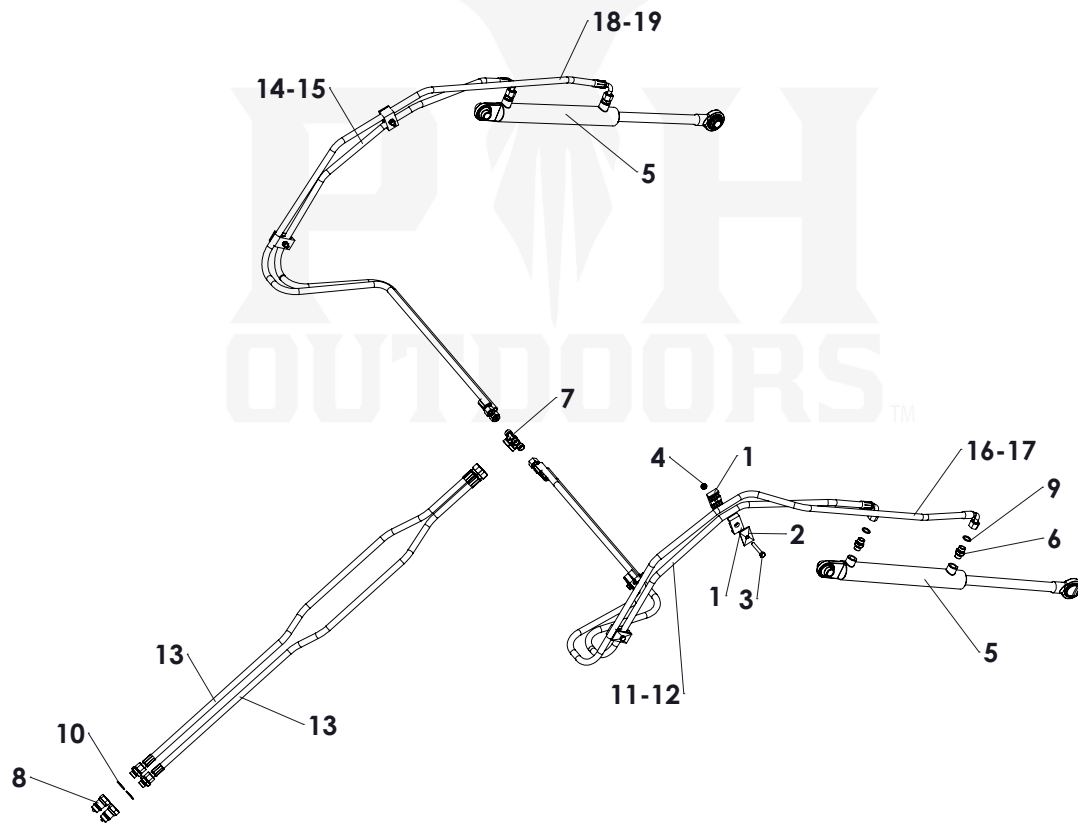
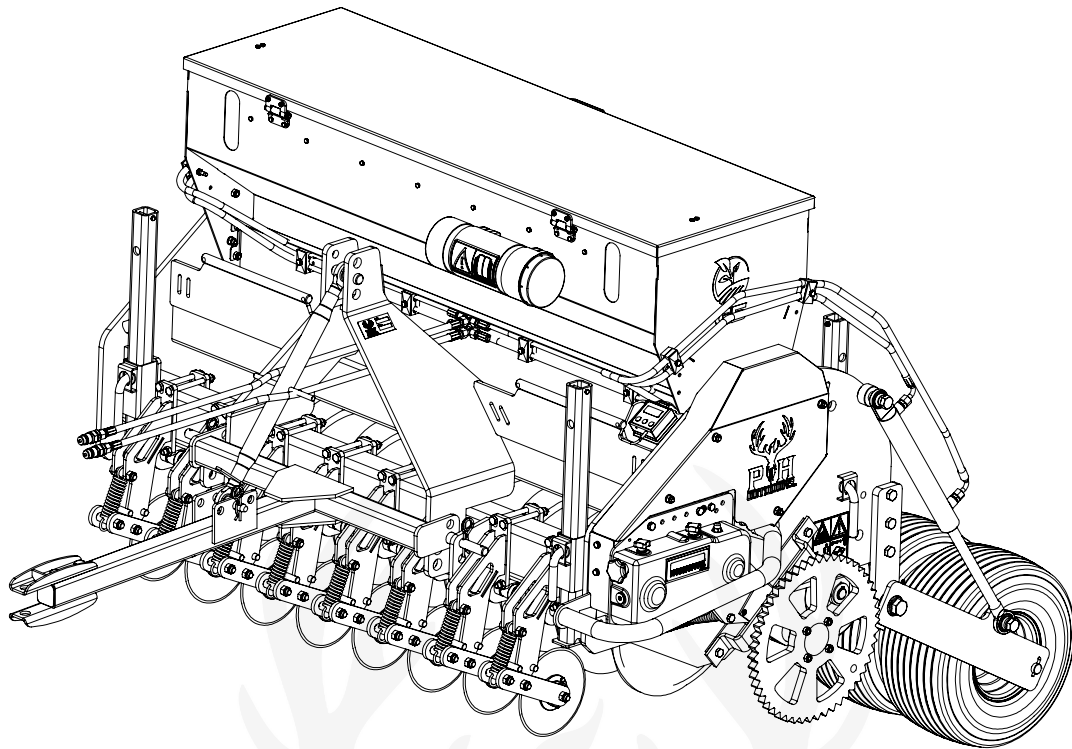
Pos.	Part number	Description	Qty.
1	G000056	Support bracket	1
2	6014290	Distance bush Ø20/Ø14.2 L=29	1
3	6014500	Distance bush Ø20/Ø14.2 L=50	3
4	6021045	Distance bush	2
5	6021009	Distance bush Ø30/Ø20.5 L=9	1
6	G000057	Bearing block	2
7	G000058	Dust cover	2
8	G000059	Disc Ø220/ 3mm	1
9	G000060	Arm	2
10	G000061	Lock plate	1
11	3640127	Spring	1
12	2806304	Bearing 6304-LLU	2
13	1112140	Bolt M14 x 140	4
14	111406510.9	Bolt M14 x 65	1
15	1114090	Bolt M14 x 90	3
16	1006020	Bolt M6 x 20	3
17	1706100	Self-Lock Nut M6	3
18	1712175	Self-Lock Nut M12	4
19	1714200	Self-Lock Nut M14	4
20	2211200	Washer M 12	2
	GDO-04	Coulter knife kit include pos. 1 till 20	
<p>G3 need 5 coulter kits for the complete machine G5 need 8 coulter kits for the complete machine G8 need 13 coulter kits for the complete machine G10 need 16 coulter kits for the complete machine</p>			



PH
OUTDOORS™



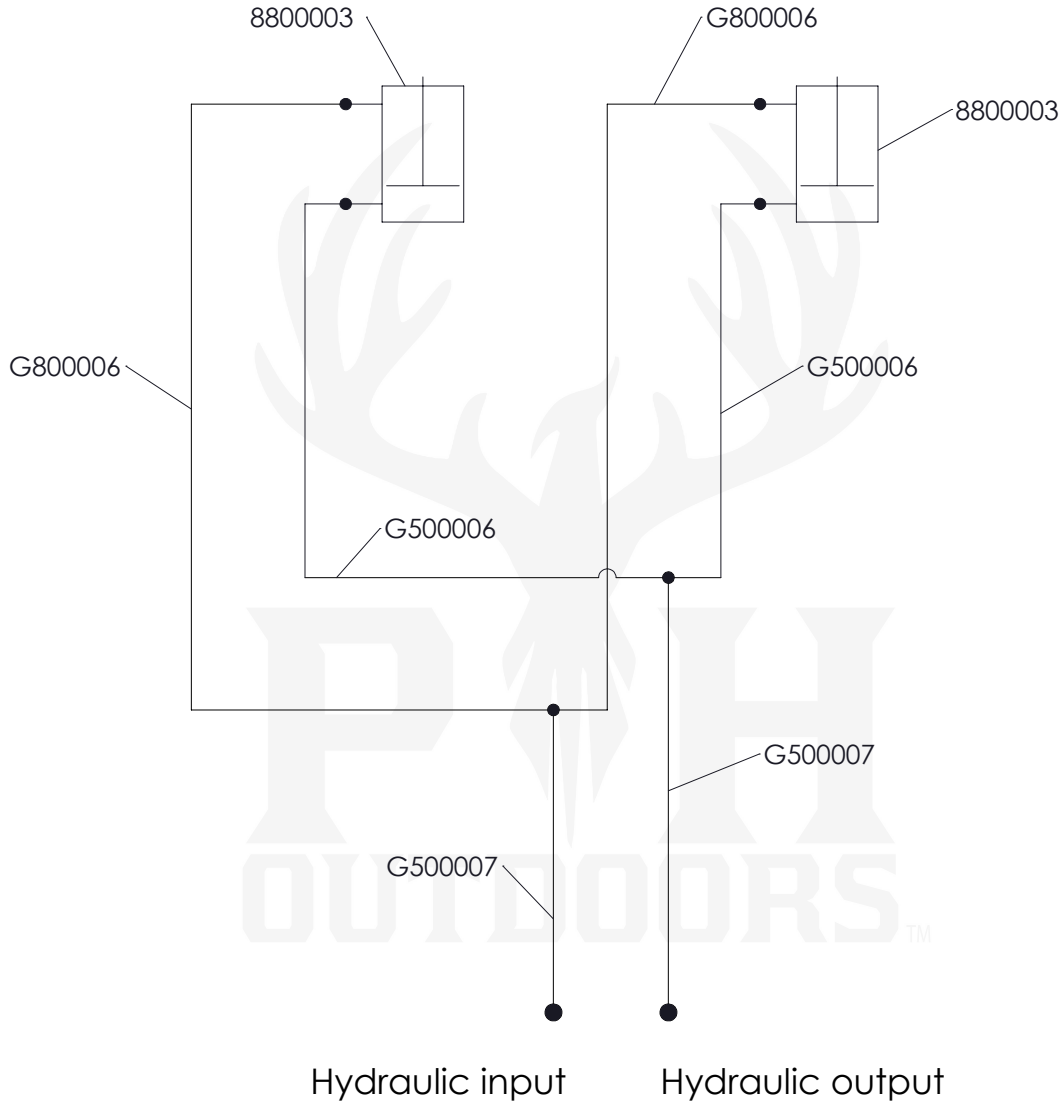
Pos.	Part number	Description	G5	G8
1	8800003	Hydraulic cylinder	2	2
2	2211201	Large washer M12	2	2
3	2221200	Spring Washer M12	2	2
4	1012035	Bolt M12 x 3	2	2
5	6025700	Distance Bush Wheel short	4	4
6	6025710	Distance Bush Wheel long	4	4
7	G500003	Wheel shaft	2	2
8	4318958	Wheel Complete	4	4
9	3836048	Lock pin	2	2
10	G800003	Bogy frame - G8	0	1
11	G500004	Bogy frame - G5	1	0
12	6024032	Collar bush Ø50/Ø24 L=32	2	2
13	6025032	Distance bush Ø32/Ø25.2 L=32 - G8	0	2
14	6025050	Distance bush Ø32/Ø25 L=50 - G5	2	0
15	4406180	Grease nipple M6	2	2
16	G800004	Drawbar Bogy - G8	0	1
17	G500005	Drawbar Bogy - G5	1	0
18	G800005	Tow eye G8	0	2
19	G300020	Tow eye G5	2	0
20	1116120	Bolt M16 x 120 - G8	0	2
21	1116110	Bolt M16 x 100 - G5	2	0
22	1716200	Self-Lock Nut M16	2	2
23	2211600	Washer M16	4	4
24	6021025	Distance bush	2	2
25	G500008	Strip	2	2
26	3811970	Toplink	1	1
27	3821912	Top Link Pin	1	1
28	3830500	R-clip Round 5, DIN 11024	1	1
29	1634100	Hex Bolt 3/4"-16 L=4" UNF G8	0	2
30	1634082	Hex Bolt 3/4"-16 L=3.25" UNF G5	2	0
31	1634114	Hex Bolt 3/4"-16 L=4.5" UNF	2	2
32	1934001	SL Nut 3/4"-16 UNF	4	4
33	1116055	Bolt M16 x 55	6	6
34	1124080	Bolt M24 x 80 class 10.9	2	2
35	1716200	Self-Lock Nut M16	6	6
36	1724200	Self-Lock Nut M24	2	2
37	2212400	Washer M24	2	2



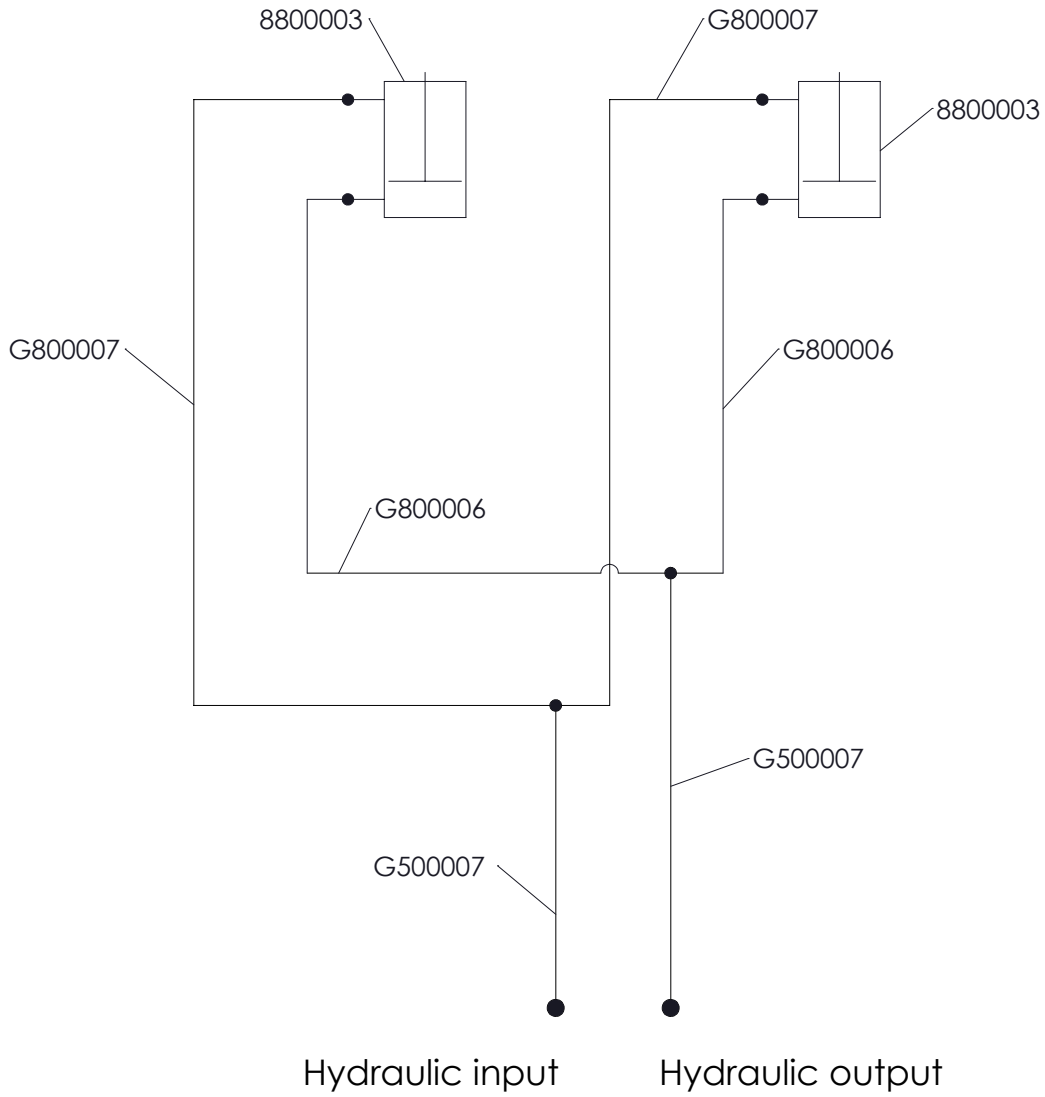
Pos.	Part number	Description	G5	G8
1	8015150	Hose clamp double 15mm	16	16
2	8015151	Cover plate hose clamp 2x15 - 2x18	8	8
3	1108050	Bolt M8 x 50	8	8
4	1708125	Self-Lock Nut M8	8	8
5	8800003	Hydraulic cylinder	2	2
6	8238120	Nipple BSP 3_8" x pipe 12 (M18)	4	4
7	8112121	T-Connector 12x12x12	2	2
8	8800001	Quick connector male 1/2"	2	2
9	2233800	Copper washer 3_8	4	4
10	2231200	Copper washer 1_2	2	2
11	G800006	Hose NSK10-3/8" TL=2450 1xPGLO1018 + 1x PGLO101890	0	1
12	G500006	Hose NSK10-3/8" TL=1950 1xPGLO1018 + 1x PGLO101890	1	0
13	G500007	Hose NSK10-3/8" TL=1850 2xPGLO101	2	2
14	G800006	Hose NSK10-3/8" TL=2450 1xPGLO1018 + 1x PGLO101890	0	1
15	G500006	Hose NSK10-3/8" TL=1950 1xPGLO1018 + 1x PGLO101890	1	0
16	G800007	Hose NSK10-3/8" TL=2770 1xPGLO1018 + 1x PGLO101890	0	1
17	G800006	Hose NSK10-3/8" TL=2450 1xPGLO1018 + 1x PGLO101890	1	0
18	G800007	Hose NSK10-3/8" TL=2770 1xPGLO1018 + 1x PGLO101890	0	1
19	G800006	Hose NSK10-3/8" TL=2450 1xPGLO1018 + 1x PGLO101890	1	0

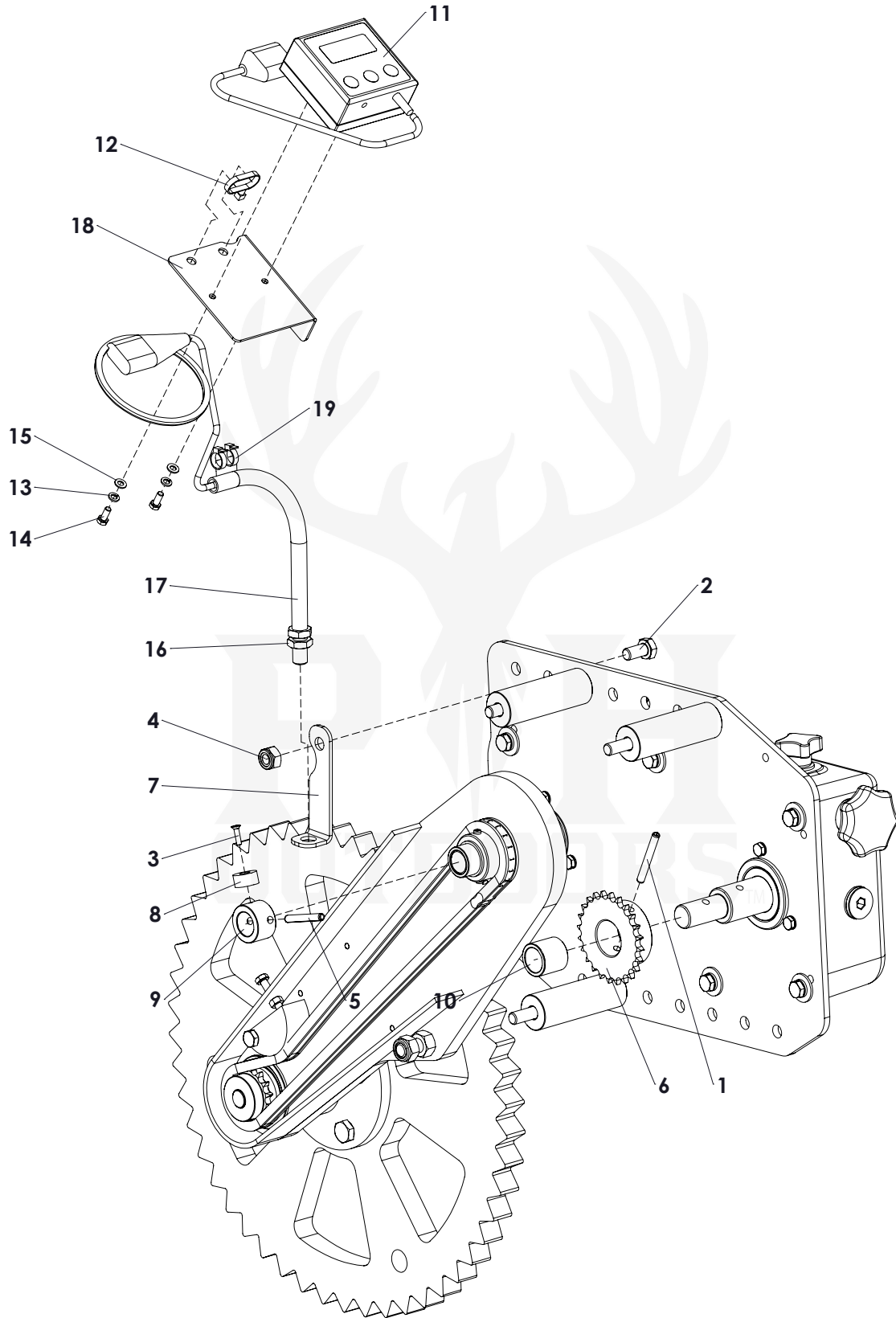


G5:

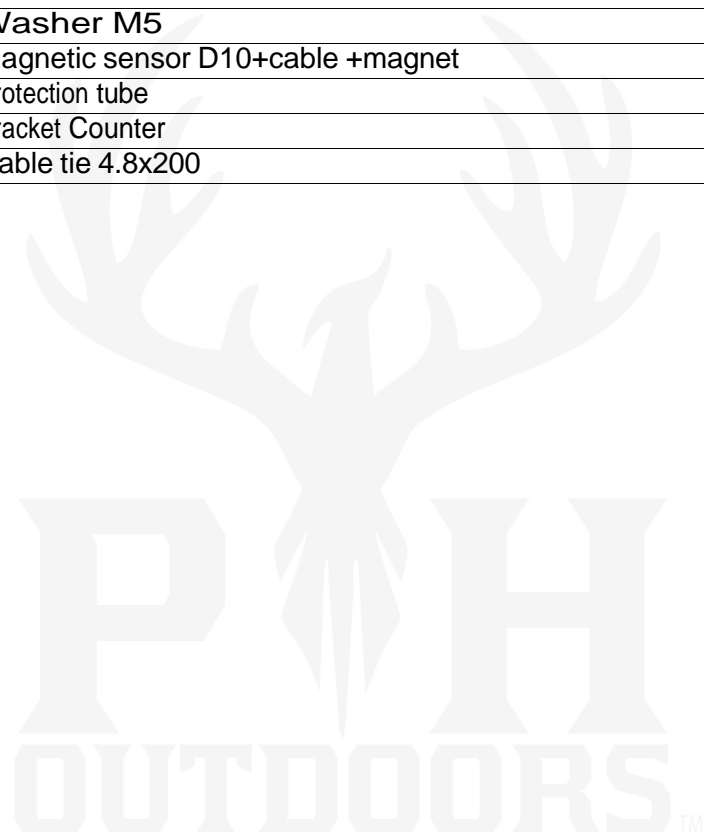


G8:



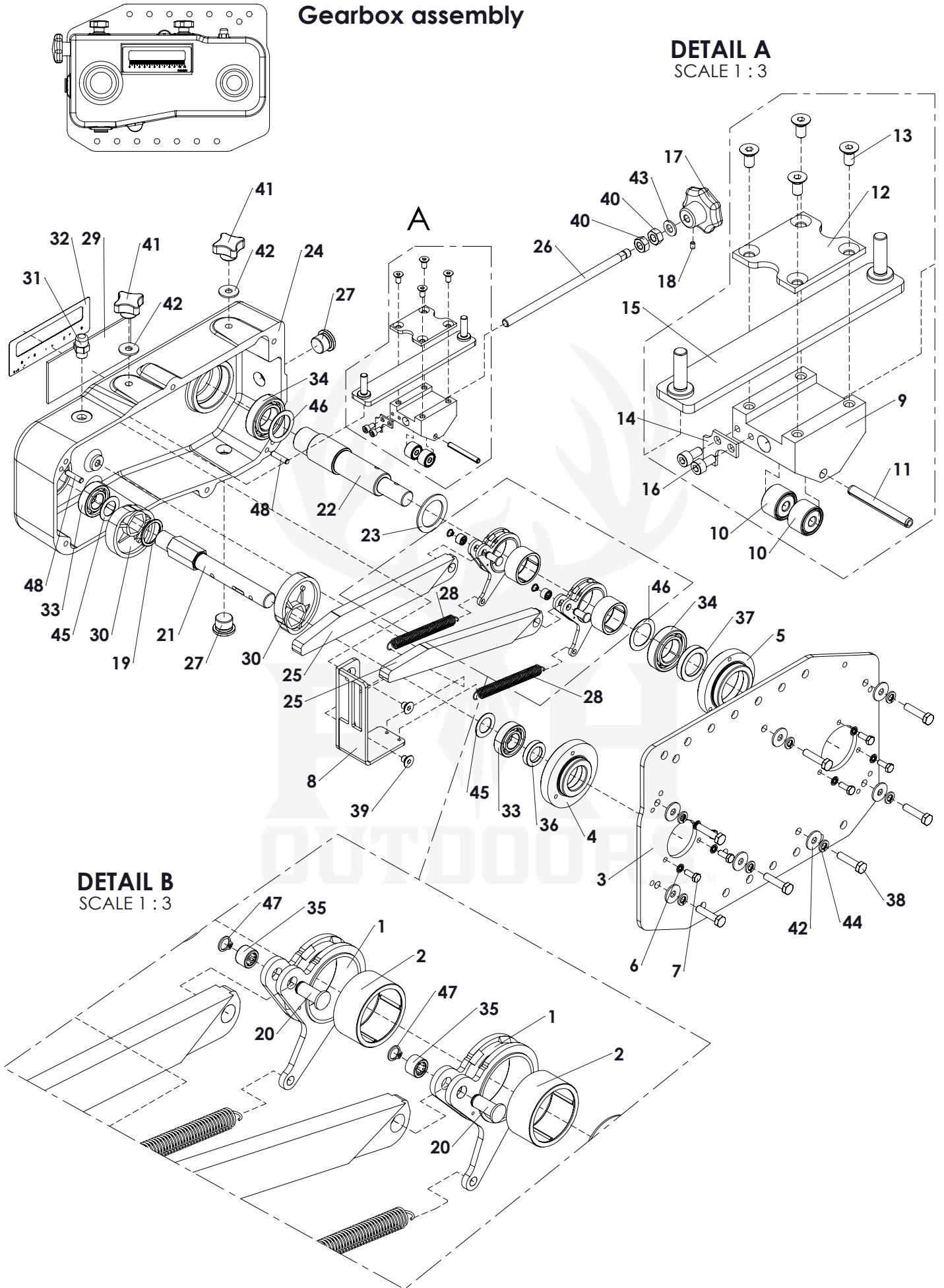


Pos.	Part number	Description	Qty.
1	2406050	Roll pin 6 x 50	1
2	1010020	Bolt M10 x 20	1
3	1410416	Bolt M4 x 16	1
4	1710150	Self-lock Nut M10	1
5	2406045	Roll pin 6 x 45	1
6	G000083	Sprocket Z 24	1
7	G000033	Sensor bracket	1
8	G000084	Magnet	1
9	G000085	Magnet bush	1
10	G000086	Bush	1
11	G000087	Counter UC300	1
12	3900007	Cable tie 4.8x200	1
13	2220500	Spring washer M5	2
14	1005012	Bolt M 5 x 12	2
15	2210500	Washer M5	2
16	G000088	Magnetic sensor D10+cable +magnet	1
17	3900006	Protection tube	1
18	G000089	Bracket Counter	1
19	3900007	Cable tie 4.8x200	2



Gearbox assembly

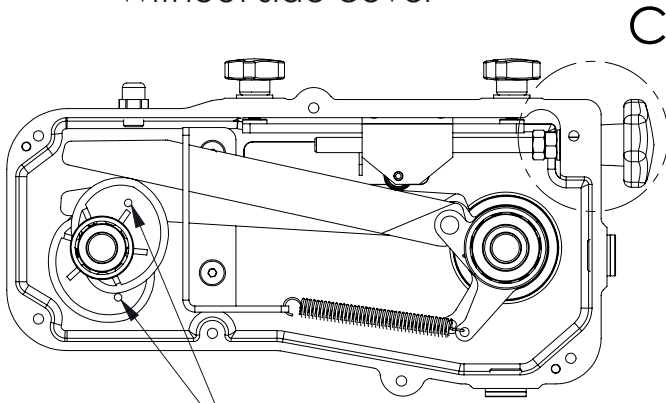
DETAIL A SCALE 1 : 3



DETAIL B SCALE 1 : 3

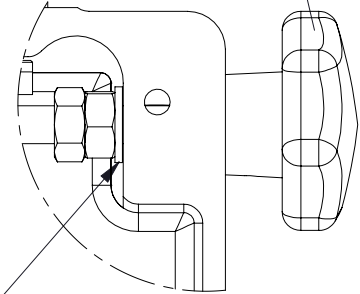
Pos.	Part number	Description	Qty.
1	G000025	Rocker arm	2
2	2703520	Bearing HF3520	2
	G000093	Rocker arm assy include pos.1+2	2
3	G000062	Gearbox back plate	1
4	G000091	Bearing hub 42 mm	1
5	G000092	Bearing hub 55 mm	1
6	2250600	Bonded seal ring M6	6
7	1006016	Bolt M 6 x 16	6
8	G000063	Guide plate	1
9	G000064	Slider block	1
10	2700612	Roller bearing	2
11	2406050	Roll Pin 6 x 50	1
12	G000067	Lock plate	1
13	1410612	Bolt M6 x 12	4
14	G000068	Indicator	1
15	G000069	Slider bracket	1
16	1420510	Inner hexagon bolt M5 x 10	2
17	G000070	Knurled knob M10x63	1
18	2505008	Set screw M5 x 8	1
19	G000071	Spacer	1
20	G000072	Pin	2
21	G000073	Shaft	1
22	G000074	Shaft	1
23	G000075	Washer	1
24	G000076	Casted gearbox housing	1
25	G000077	Rocker strip	2
26	G000078	Threaded rod M10x210	1
27	8712001	Blind plug G1/2	2
28	G000079	Spring	2
29	G000080	Window	1
30	G000081	Ex center	2
31	8714002	Breather 1/4"	1
32	G000082	Gauge decal	1
33	2706004	Bearing 6004	2
34	2706006	Bearing 6006	2
35	2700808	Bearing HK0808	2
36	7020320	Oil seal 20-32-7	1
37	7030450	Oil seal 30-45-8	1
38	1008035	Bolt M8 x 35	7
39	1410810	Bolt M8 x 10	2
40	1810150	Nut M10	2
41	1808002	Closed Knob M8	2
42	2210801	Large washer M8	9
43	2211000	Washer M10	1
44	2220800	Spring Washer M8	7
45	2242010	Shim Ø20xØ32x1.0	2
46	2243010	Shim Ø30xØ42x1.0	2
47	2610800	Circlip d=8	2
48	2406026/P	Parallel pin 6 x 26	2
	G000090	Speed adjustable box complete (include pos. 1 till 48)	1

Without side cover



Mount knob as far as possible on threaded rod and adjust set screw

DETAIL C
SCALE 1 : 2

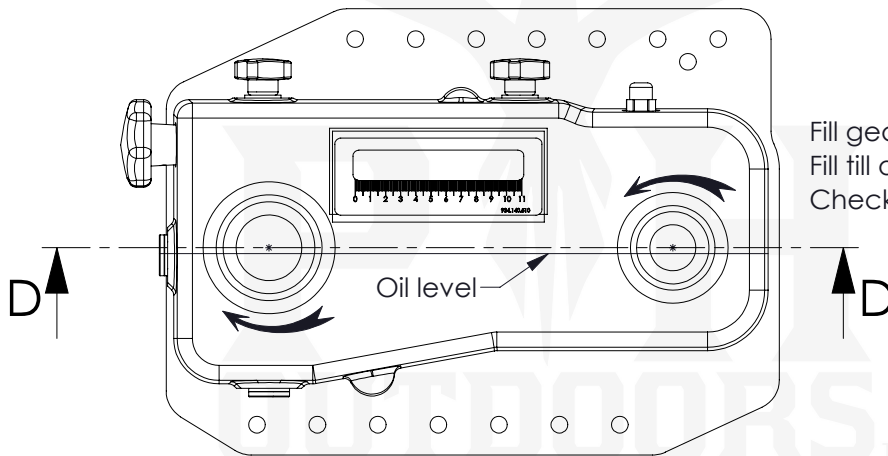


Keep $\pm 2\text{mm}$ clearance distance between washer and casting!
Adjustment must rotate smooth.

Warning!

Make sure the excenters are positioned correct:

- The nodge has to be faced outwards.
- Timing: 180° shifted from each other
- If not correctly installed a shocked rotation will occur at the output shaft.



Fill gearbox with $\pm 1,4\text{L}$ 80W90 oil
Fill till oil level line
Check for leakage after filling

SECTION D-D
SCALE 1 : 5

